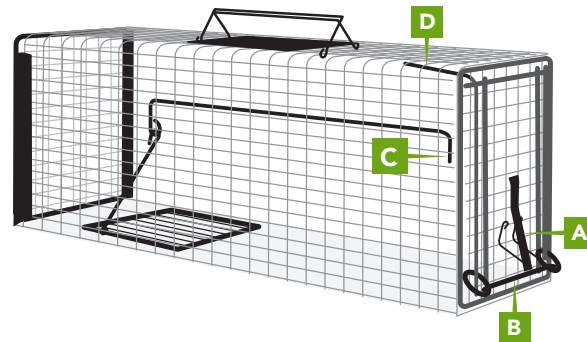


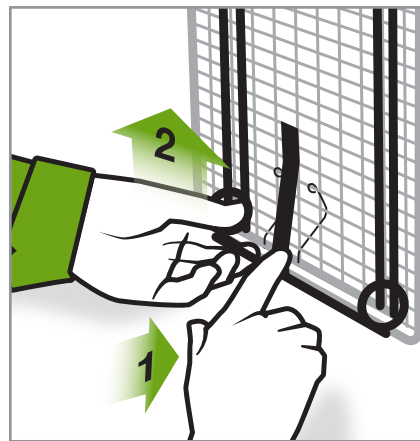
Setting Instructions for Tomahawk Gravity Series Traps

Tomahawk Gravity Series Traps Featuring Gravity Powered Trap Doors

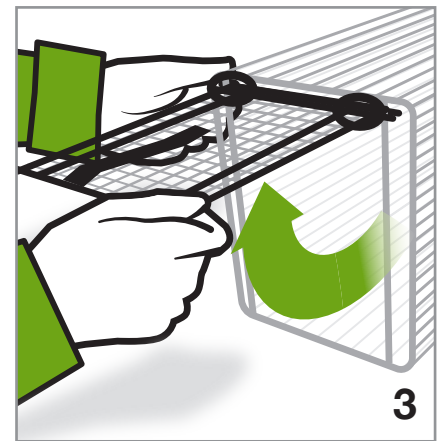
- Co-designed and endorsed by Neighborhood Cats.
- Front door drops by using gravity, no springs involved.
- Locking trap doors, unlike all other gravity traps on the market which don't have door locks.
- Simple to set, just lift the ring rod with one hand then lift the trap door and set your trap.
- Easy Release rear door, allows for easy animal release or transfer of captured animals.
- Extra-Large trip plate, to prevent animals from stepping over the plate and stealing bait without setting off the trap
- Large hand guard to prevent handlers from getting scratched and also convenient for labels
- Double handles to improve stability when carrying a trapped animal.
- Built to last a lifetime.



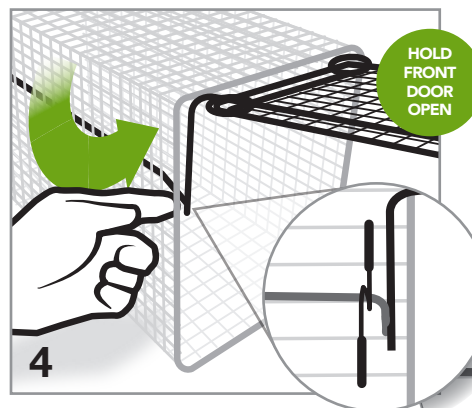
- A** Front Door Lock
- B** Ring Rod
- C** Trigger Rod
- D** Door Rod



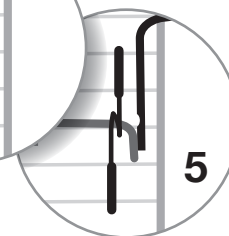
1) Push in front door lock and 2) slide ring rod up to the top of the door.



3) While holding ring rod, use your other hand to lift the door up so it's completely open.



4) While holding the door open, use your finger with the opposite hand to turn the trigger rod up, so it's aligned with the groove of the door rod. Slowly move the door down, so the trigger rod rests firmly in the door rod groove.



5) For very sensitive set to catch kittens, pull down on the trigger rod until it is past the groove in the door rod.

"This is the best trap available today,"
says Neighborhood Cats.

Neighborhood Cat Trap Accessories

Our NC Transfer Cages were designed with help from the Neighborhood Cats Organization. These cages allow for the safe and easy transfer from trap to cage for traps with release doors, including models GT606 and GT608. They feature an easy release sliding door, extra-large hand guard, extra-large double handles, and a bottom tray. The tray is also removable for easy cleaning.



TRANSFER CAGES

Model	Suggested Animal Sizes	L - W - H	Construction	Wt
306NC	Feral Cat Series Transfer Cage	20 x 11 x 12	1 x 1 - 14 gauge	7 lbs
306NC2	Feral Cat Series Transfer Cage with Two Transfer Doors	21 x 11 x 12	1 x 1 - 14 gauge	8 lbs
30622	Feral Cat Series Two Chamber Transfer Cage	42 x 11 x 12	1 x 1 - 14 gauge	12 lbs



"See Through" Clear Rear Sliding Door for Feral Cat Traps. The Neighborhood Cats "See Through" Rear Release Door is designed to fool the smartest and most trap shy cats. The clear acrylic rear release door allows cats to see completely through the trap and fools them into believing they can walk through.

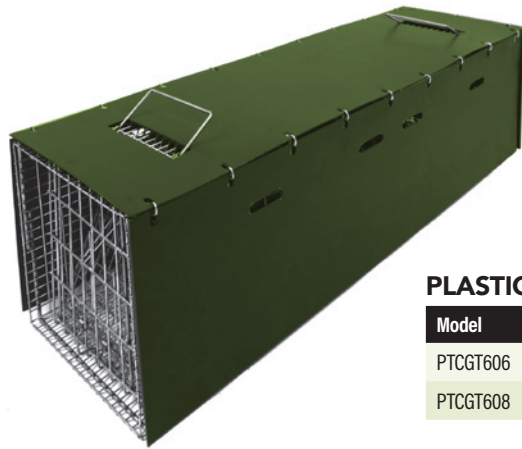
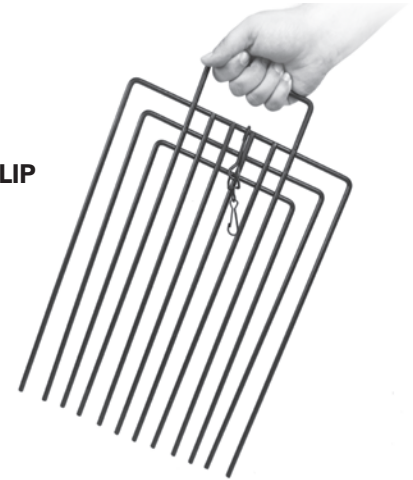
CLEAR REAR DOOR

Model	Description	Traps To Use With Accessory	Construction
NC0911	Clear Release Door	Fits GT606	Acrylic
NC1212	Clear Release Door	Fits GT608	Acrylic

FERAL CAT TRAP DIVIDER – 1/4" POWDER COATED STEEL ROD WITH LOCKING CLIP

Trap Dividers allow you to confine animals in a trap by simply sliding it down from the top or through the side of the trap. Use the divider to isolate the animal, then open the door and replace food and water. Close the door and remove the divider.

Model	Description	Traps to Use With Divider	Construction	Wt
TD12NC	12" Divider	206NC, 606NC, 608NC, 608FN 108, 608, 106, 606	1/4" Powder Coated Steel Rod	3 lbs



Protects Animals and People – Plastic trap covers not only calm trapped animals but also shelter them from weather and provide shade from the sun. They also visually hide animals from people and reduce risk of injury to trapped animals and people passing by.

Durable - These covers are constructed from UV stabilized .090 polyethylene. They hold up against the elements and will last for many years.

PLASTIC TRAP COVERS – (MADE CUSTOM TO FIT ANY TRAP)

Model	Traps to Use With	Construction	L-W-H
PTCGT606	Fits Trap Model GT606	.090 low density polyethylene	30 x 19 x 11
PTCGT608	Fits Trap Model GT608	.090 low density polyethylene	30 x 12 x 12



Dependable. Tough. **Tomahawk.**

Call: 800-272-8727 for more information
or visit online at www.livetrapp.com