

KORO Live Beaver/Otter Trap Setting Instructions



No assembly required. Trap is set in only a few seconds.

Step 1: Hold trap in a upright position and lock rings with the swivel bracket. (as shown in figure 2).

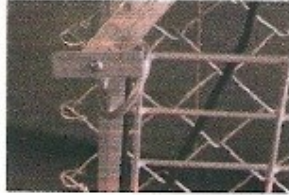


Figure 1: unlocked ring



Figure 2: Locking the ring

Step 2: Lay trap on the ground with the chain link facing up. Push the trap lock forward and pull the trap open. (as shown in figures 3 and 4)



Figure 3



Figure 4

Step 3: Proceed to finish setting the trap by placing the trigger arm under the pan hook. (figure 5) The safety ring located beside the pan is used for positioning trap safely in desired location. Positioning of the trigger components are shown in the following figures.



Figure 5



Figure 6: front trigger system in set position.

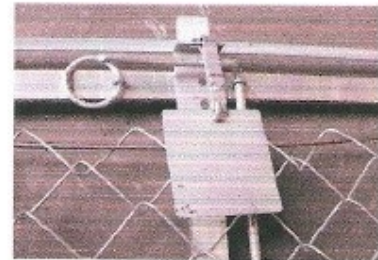


Figure 7: trap is set and in firing position. (safety located to the left)

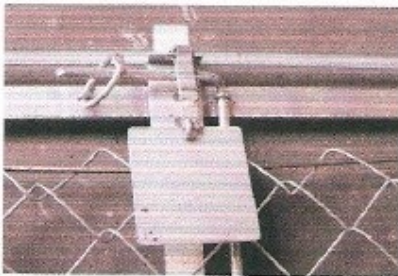


Figure 8: trap set with safety on.

Step 4: The trap is in the set position (figure 9). The live beaver/otter trap does not have to be set in a certain level of water, it can be set at any level. The desired bait or lure should be placed over the pan.



Figure 9

**PLEASE USE
EXTREME
CAUTION
WHEN
SETTING
THIS TRAP!!**

To release the animal after capture unlock the rings and fold the triangular half down to create an escape hole at the rear of the trap. (as shown in figure 10)



Figure 10