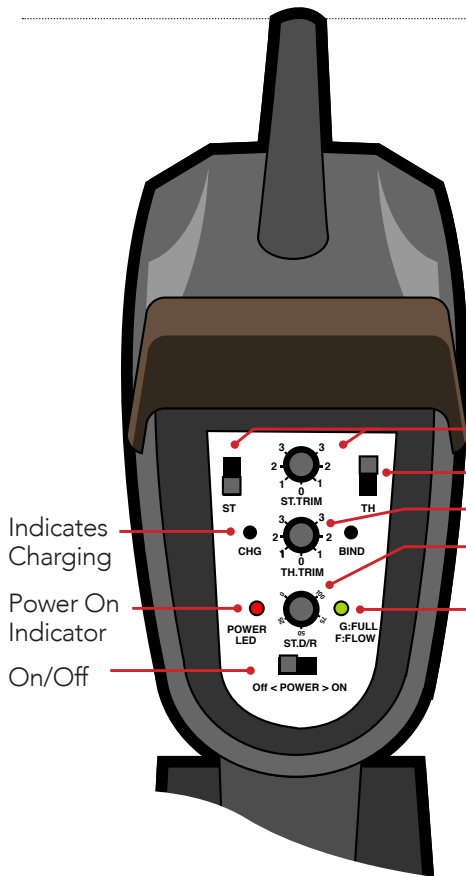


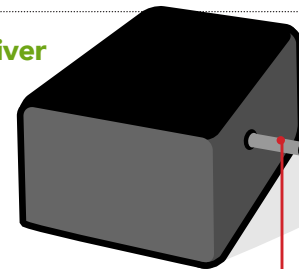
Remote Control Trigger Instructions



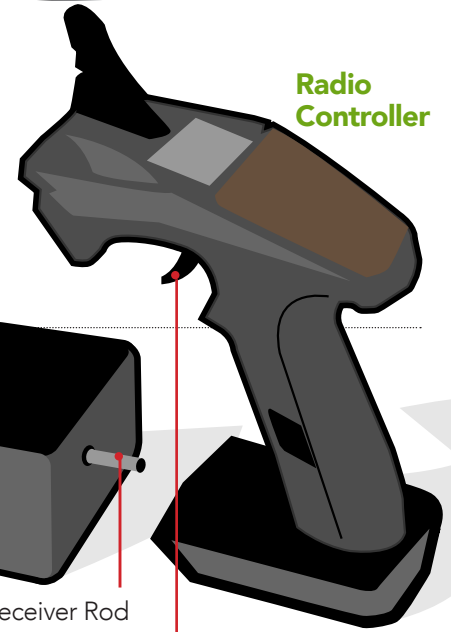
Radio Controller Layout

- Indicates Charging
- Power On Indicator
- On/Off
- Not Used
- Reverses Action of Trigger
- Receiver Rod Adjust
- Not Used
- Battery
- Solid Green=Battery Full
- Flashing Green=Battery Low

Receiver Unit



Receiver Rod



Radio Controller Trigger

Radio Controller Trigger

Changing and Charging the Batteries on Your Remote Control Trigger Unit

- The radio controller contains a rechargeable lithium-ion battery. Use the included USB cable to charge the battery.
- The receiver unit requires 4 AA batteries that are included but not installed. To install or change batteries you will need a fine point Phillips head screwdriver. Remove the four black screws on the bottom of the receiver unit. Once complete, remove the cover to access the battery case by turning the unit back to the upright position with the cover facing down and shake gently so the cover will drop open. If you have difficulty you may need a small knife or flathead screwdriver to gently pry the cover open from the edge.

Tips for Successful Remote Control Trapping

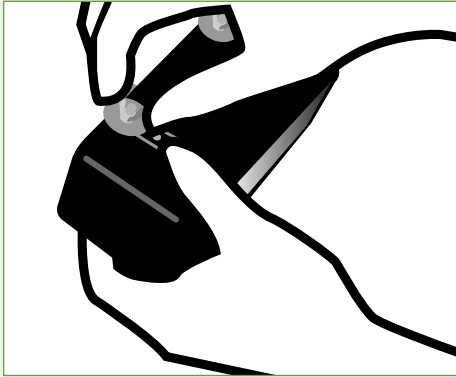
- Be patient. Wait for your target animal to be comfortable and relaxed in the trap. Do not pull the trigger while the animal is entering the trap or the door may come down on them.
- After your animal is trapped approach the trap slow and calm. If you run towards the trap the animal will be more stressed and scared.
- Cover the trap with a trap cover or a towel to make the animal feel more comfortable while in the trap.

Common Remote Control Trigger Unit Mistakes

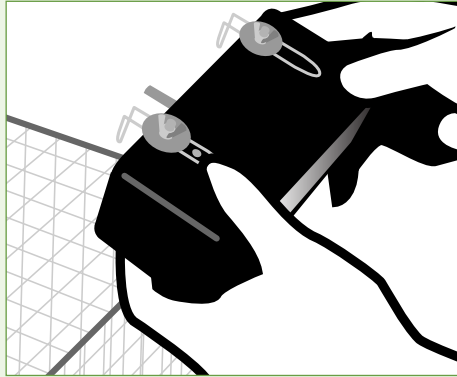
- Do not move the upper switches on the radio controller. These effect how the radio controller trigger operates and can reverse the action of the receiver rod. The left switch should be down and the right switch should be up.
- Make sure both units are on. If one of the units is not turned on the system will not function. Both units must remain on during use.
- Check the batteries. If the batteries are dead on either unit, the system will not function.
- What are the three turn knobs on the radio controller for? The middle knob will adjust the position of the receiver rod on the receiver unit. The top and bottom knobs are not used.

Standard Trap Receiver Unit Mounting Instructions

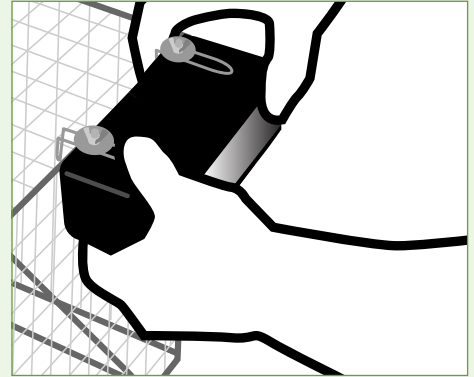
The Remote Control Trap Trigger will work on all Tomahawk Traps with a spring loaded door and trigger rod. With part DTRA (Remote Trigger Mounting Bracket and Prop), it can also be used on the Neighborhood Cats Drop trap as described in the next section of the instructions. When placing the receiver unit on a standard trap make sure to install it on the opposite side of the built in trigger rod. If facing the trap from the front this would be the left hand side.



- 1 Loosen wing nuts so the hooks on the receiver unit move freely.



- 2 After loosening the hooks, slide them out leaving enough of a gap to attach the receiver unit to the top right corner of the trap. **Note the receiver unit is always mounted on the opposite side of the trap trigger.**

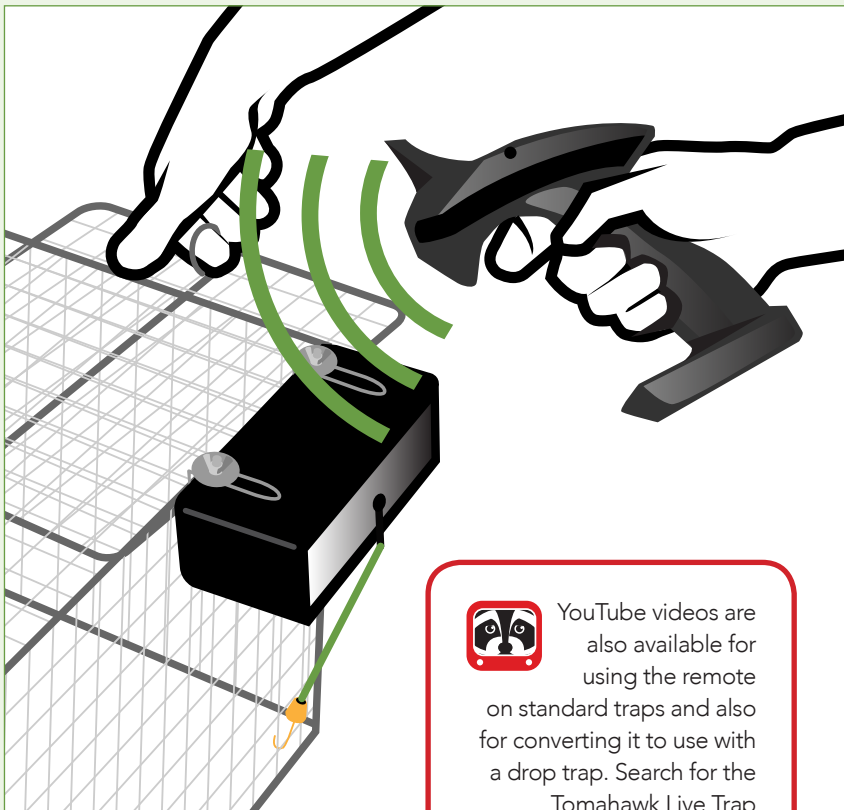
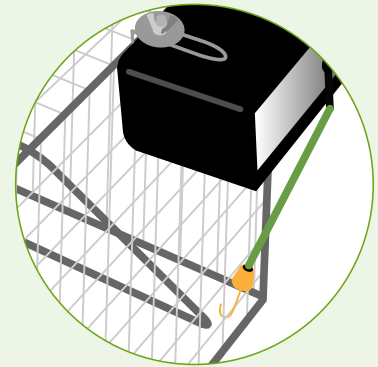


- 3 Once in place, pinch the hooks tight against the side of the trap and tighten the wing nuts to secure the receiver unit.

USING LARGE DOG TRAPS

When using with larger traps such as dog traps the receiver unit should be placed down one inch on the side of the trap to make extra room for the thicker door.

- 4 Next, pull the bungee cord down so it is tight and hook it to the trap for added stability. Do not over stretch the bungee cord but do make sure it is tight.



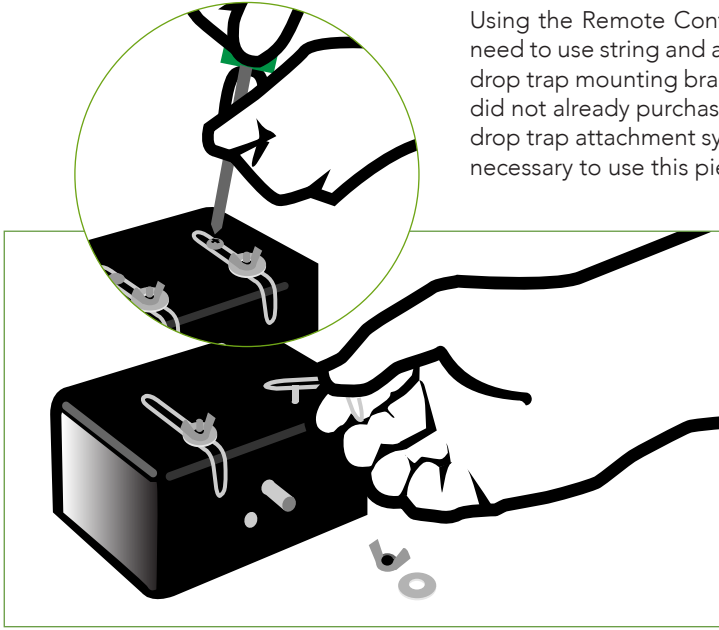
YouTube videos are also available for using the remote on standard traps and also for converting it to use with a drop trap. Search for the Tomahawk Live Trap Channel on youtube.com

Setting the Trap

- Turn on both the radio controller and receiver unit.
- Pull and hold the radio controller trigger on the radio controller so the receiver rod on the receiver unit is fully retracted.
- Lift the trap door up past the receiver rod of the receiver unit.
- Release the radio controller trigger so the receiver rod of the receiver unit is fully extended.
- Rest the door on the receiver rod of the receiver unit.
- Now test the remote control trigger unit to make sure the door closes. If the door does not close or you feel it takes too long, you may need to adjust the position of the receiver rod by turning the middle knob on the radio controller. This adjusts the length of the receiver rod slightly, but can make a big difference in how quick the door closes.

Drop Trap Receiver Unit Mounting Instructions

Using the Remote Control Trap Trigger with a Neighborhood Cats Drop Trap eliminates the need to use string and also allows you to be much further away from the trap. You will need the drop trap mounting bracket and detached prop. You can purchase these parts separately if you did not already purchase a kit that included them. A U-shaped safety hook is included with the drop trap attachment system to help prevent kickback of the prop when the trap drops. It is not necessary to use this piece but it is recommended as an extra safety precaution.

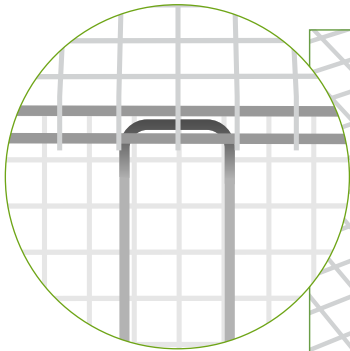


Removing Existing Brackets on the Receiver Unit

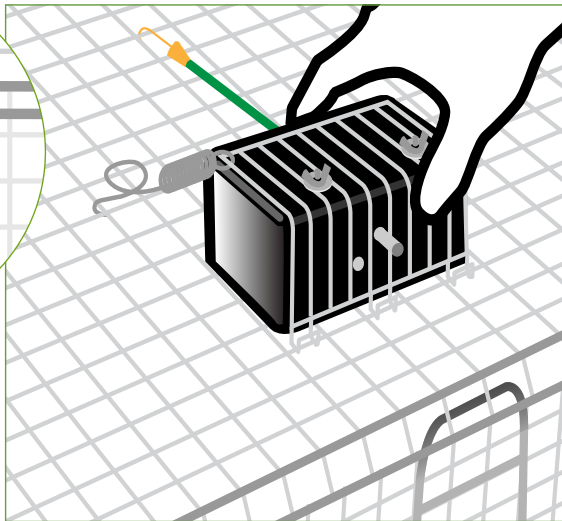
- Use a standard Phillips head screwdriver to remove the two screws holding the small mounting brackets down.
- Remove the two adjustable wing nuts and large washers but keep these parts handy for use in a later step
- Remove the small brackets. Store these brackets and the screws removed for use with a standard trap. These parts are not used with the drop trap.

Attaching Mounting Bracket for Drop Trap

- Attach the drop trap mounting bracket to the receiver unit by placing it on top of the unit with the receiver rod facing forward and the springs and bungee in back.
- After setting the mounting bracket on the receiver unit, place the two washers on small bolts facing upward from the receiver unit.
- Screw on the two wing nuts that were removed onto the bolts. This will hold the mounting bracket in place.
- Receiver unit is ready to mount on drop trap.

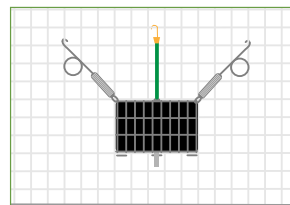


- Tuck the connected trap prop bar upward under the lip of the trap top.



Attaching to Drop Trap

- Attach the receiver unit to the top of the trap.
- Tuck the hooks of the drop trap mounting bracket under the wire mesh of the trap top. Placement should be three rows back directly behind the connected trap prop bar position.
- Attach the spring hooks of the receiver unit to the trap top at a backward angle (see below).

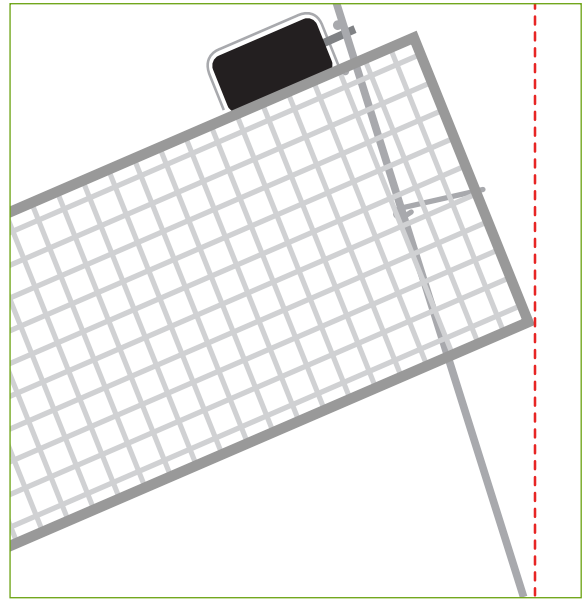
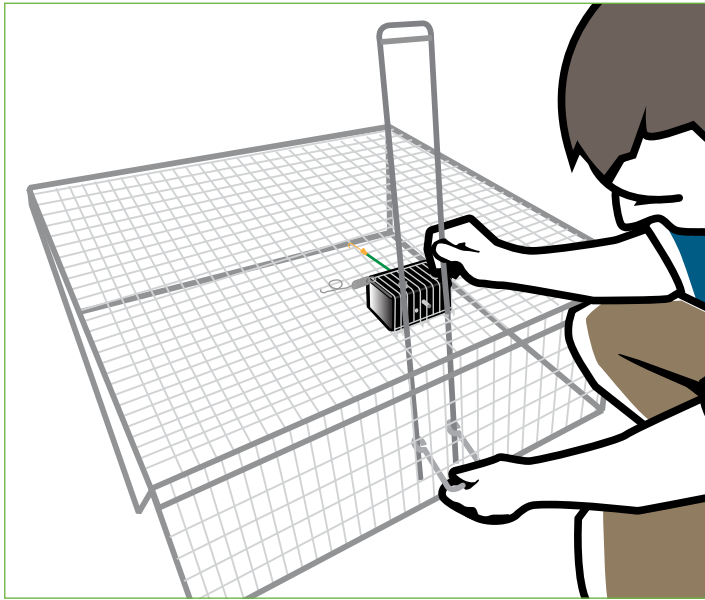


Top view

TEST YOUR TRAP BEFORE YOU TAKE IT IN THE FIELD

- Turn on the radio controller by lifting the smoke-plastic lid on the back of unit. Slide the power switch (the one closest to you) to the right. A red and green LED should light up.
- Turn on the receiver unit by switching on the toggle switch. Now pull the trigger on the transmitter unit. The receiver rod should retract when you pull the trigger and extend when you release it.

Install your remote prop and prop safety holder



- Insert the two prop prongs down into the trap directly in front of the receiver unit. Make sure the welded piece on the prop is facing the receiver unit so it can rest on the receiver rod.
- Place the safety prop holder loops into the trap through the wire mesh. Then place the two prongs of the prop into these loops. This is to protect the animals and hold the prop in place when the trap is triggered and drops.
- Turn your receiver unit and remote controller on.
- Lift the drop trap and rest receiver rod on to the bar on the prop.
- Test by pulling the radio controller trigger. If the trap does not drop freely you may need to adjust the position of the prop.

Propped Side View

Note: Prop should not extend past the edge of the trap

***** WARNING *****

Both the receiver unit and radio controller contain electronic components and batteries.
Do not get either unit wet. Do not use in rain or snow.

The radio controller contains a rechargeable lithium ion battery. Lithium-ion batteries can ignite and start fires without warning. Do not use a damaged or leaking battery. Never charge and discharge a battery at the same time.

Receiver unit uses 4-AA batteries. For use in cold weather use lithium-ion AA batteries (available at most retailers) for longer function. Standard alkaline batteries lose power in cold weather.



Call: 800-272-8727 | Online: www.livetrapp.com