



**Tomahawk** llc.  
L I V E ■ T R A P

**One Year**  
FACTORY WARRANTY

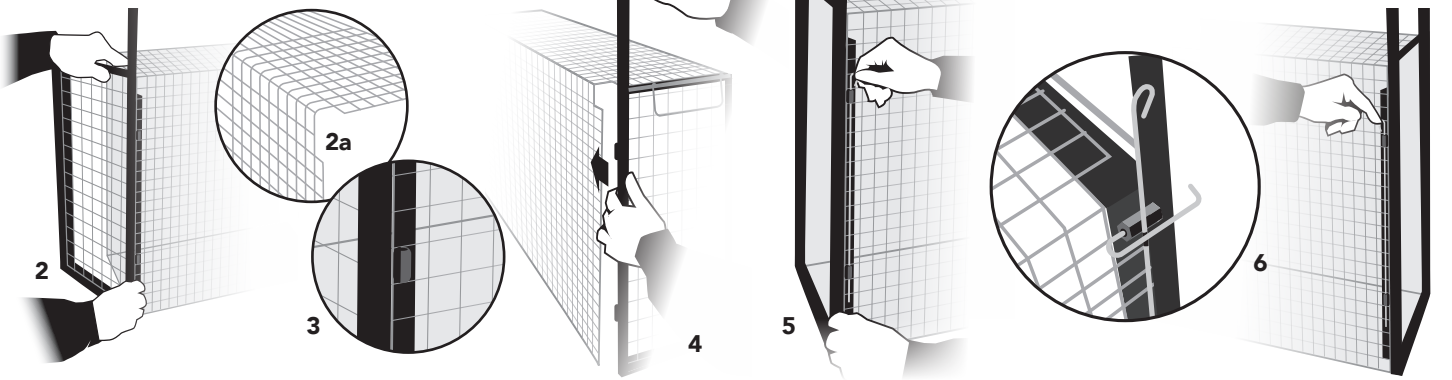
**PROUDLY**  
MADE IN THE USA

*Mfg* Animal  
Equipment Since  
**1925**  
www.livetraps.com

# Bobcat Trap Instructions

**1.** Cut Zip ties that attached the door frame to the trap and pull out to install. Open envelope containing the trigger cable and door pins-set aside.

## Installing the Door



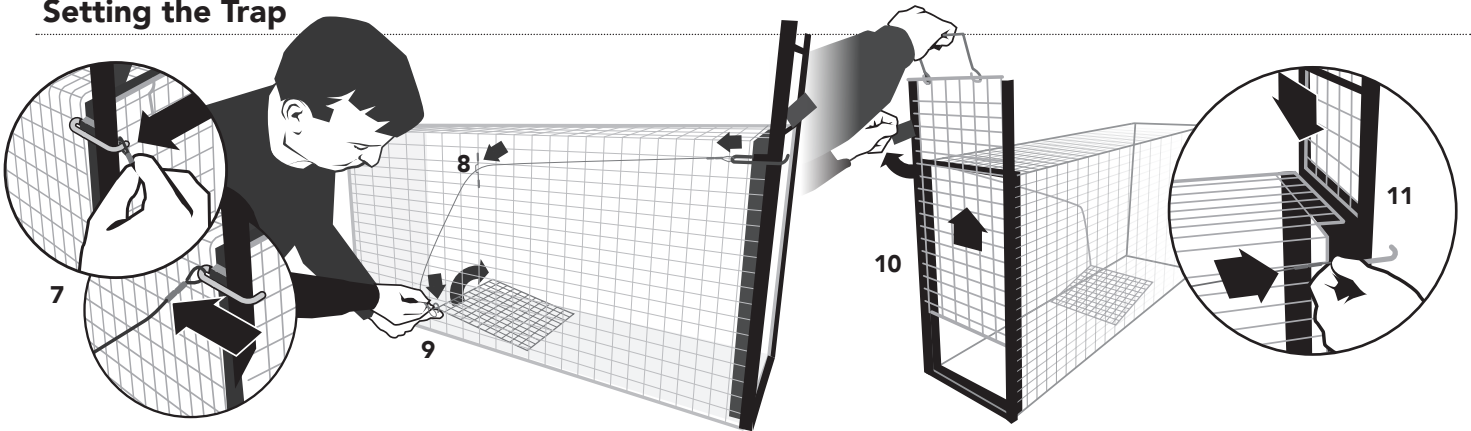
**2.** Insert the door frame with the door handle facing toward the top of the trap. **2a.** Note: the trigger ring will nestle into the notch in the upper left of trap. **3.** Facing the trap, insert the right side of door frame insert into the first column of the wire mesh at approx a 45° angle. This can be a tight fit around the door pin sleeves--press firmly.

**4.** Now insert the left side of the door frame insert into the trap's wire mesh. Press wire mesh firmly so the door pin sleeves are protruding from the mesh.

**5.** Once set into place, insert the door frame pins sleeves making sure the pins are sliding over the trap wire mesh. This secures the door in place. Make sure to push the pin so it's completely inserted.

**6.** Finish securing the door by inserting the door pin on the left side. Note: pin needs to be inserted through the Trigger ring first to properly align the pin into the door pin sleeves

## Setting the Trap



**7.** Feed the trigger cable onto the trigger ring by threading eyelet onto the 'L' portion of the ring. It will be a snug fit. Some force will be needed to complete the step. **8-9.** Once complete, thread the other end of the cable through the trap eyelet and down through the trigger pan ring. You may have to lift the trigger pan to attach the cable to the trigger pan ring.

**10.** Once the cable is attached, swing the door lock forward and lift the door with you right hand until bottom of the door is above the trigger ring. **11.** With your left hand pull the trigger ring forward and gently rest the door on the trigger ring. The weight of the door will hold the trigger ring and pan in place. **Your trap is now set.**



**Tomahawk** llc.  
L I V E ■ T R A P

**Call: 800-272-8727 | Online: [www.livetraps.com](http://www.livetraps.com)**